



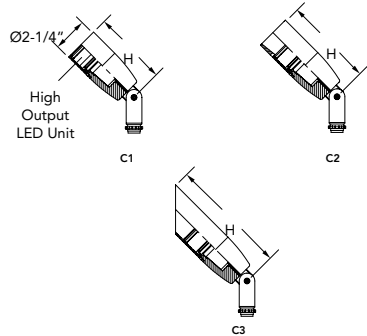
ASPEN LED

Design2Ship™
WINSCAPE® 12V LED16



Specifications

| | |
|----|---------------------|
| D: | + Mounting |
| H: | 4-3/4" (121mm) w/C1 |
| | 5-3/4" (146mm) w/C2 |
| | 7-5/8" (194mm) w/C3 |



| | |
|----------------|--|
| CATALOG NUMBER | |
| NOTES | |
| TYPE | |

DESCRIPTION

Design2Ship™ is a quick-ship program with a 5 business days from clean release

The Aspen series accent lights are suitable for a variety of mounting applications including ground, wall, tree, sign and architectural accents. Suitable for wet locations.

ORDERING INFORMATION

EXAMPLE: ASPEN QS A 3LED16 30K 12 NSP FLC KM BL

| Series* | Program | Material* | Source* | Color Temperature* | Voltage* | Distribution* |
|----------------|--------------------------------|--|--|--|---|----------------------|
| ASPEN | QS Quick ship (5 day shipping) | A Aluminum | 3LED16 | 30K | 12' | NSP 10° Narrow Spot |
| | | SS Stainless Steel | | 40K | | NFL 25° Narrow Flood |
| | | | | 50K | | FL 40° Flood |
| Lens* | Mounting* | Mounting Accessories* | Options | External Caps* | Finish* | |
| FLC Flat Clear | KM Knuckle | Independent Mounting JBA Aluminum J-Box CN5 5" round canopy STK Mounting Stake | Internal Louver IHL Honeycomb Louver Internal Accessory L3 Softening Lens | C1 Short Flush C2 Recessed Lens C3 45° Angle Cut | All Material BL Black Textured DBL Black Smooth DDB Designer Bronze DNA Natural Aluminum | |

*Required Fields

Notes:

1 Remote transformer required.



9144 Deering Avenue, Second Floor • Chatsworth, CA 91311
Phone: 866.533.9901 • www.hydrel.com

©2014-2017 Acuity Brands Lighting, Inc.
Rev. 12/21/17
ASPEN_LED_QS

PERFORMANCE DATA

LUMEN OUTPUT

Lumen values are from photometric tests performed in accordance with IESNA LM-79-08. Data is considered to be representative of the configurations shown, within the tolerances allowed by Lighting Facts. Actual performance may differ as a result of end-user environment and application. Contact factory for performance data on any configurations not shown here.

| Light Engines | Dist. Type | Beam Angle | Field Angle | 30K | | | | |
|---------------|--------------|------------|-------------|------------------------|-----------------|----------------|------------------|----------|
| | | | | Centerbeam Candlepower | Power (Wattage) | Efficacy (LPW) | Delivered Lumens | CRI (Ra) |
| 3LED16 | Narrow Spot | 10° | 28° | 2400 | 5.8 | 38 | 220 | >83 |
| | Narrow Flood | 25° | 42° | 1000 | 5.8 | 37 | 215 | >83 |
| | Flood | 40° | 70° | 750 | 5.8 | 36 | 210 | >83 |

| Light Engines | Dist. Type | Beam Angle | Field Angle | 50K | | | | |
|---------------|--------------|------------|-------------|------------------------|-----------------|----------------|------------------|----------|
| | | | | Centerbeam Candlepower | Power (Wattage) | Efficacy (LPW) | Delivered Lumens | CRI (Ra) |
| 3LED16 | Narrow Spot | 10° | 28° | 4200 | 5.8 | 55 | 320 | >65 |
| | Narrow Flood | 25° | 42° | 1500 | 5.8 | 51 | 300 | >65 |
| | Flood | 40° | 70° | 890 | 5.8 | 44 | 260 | >65 |

Projected LED Lumen Maintenance

Data references the extrapolated performance projections for the Fixture platform in a 25°C ambient, based on 10,000 hours of LED testing (tested per IESNA LM-80-08 and projected per IESNA TM-21-11).

To calculate LLF, use the lumen maintenance factor that corresponds to the desired number of operating hours below. For other lumen maintenance values, contact factory.

| Operating Hours | 0 | 20,000 | 40,000 | 60,000 |
|--------------------------|-----|--------|--------|--------|
| Lumen Maintenance Factor | 1.0 | 0.92 | 0.85 | 0.71 |

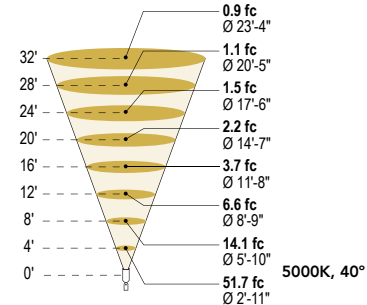
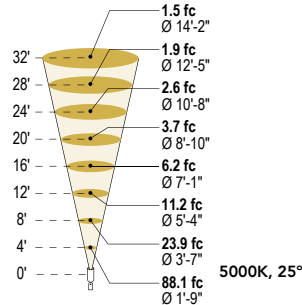
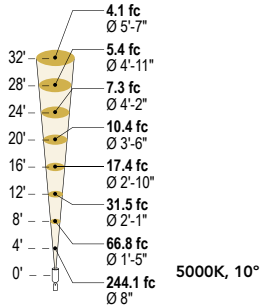
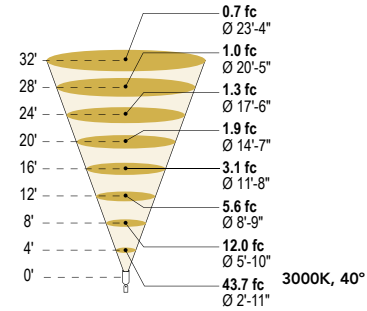
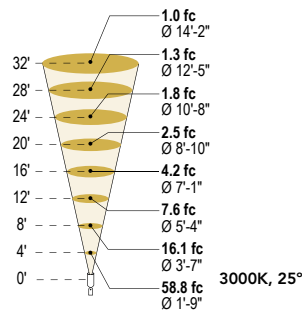
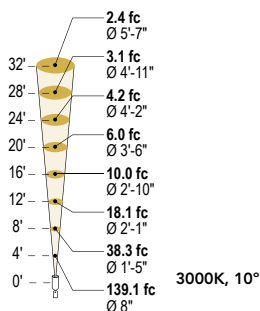
LED LIFE: L70/60,000 hours

OPERATING TEMPERATURE: -30°C Through 40°C

PHOTOMETRIC DIAGRAMS

To see complete photometric reports or download .ies files for this product, visit www.hydre.com

Iscandela plots for ASPEN LED



FEATURES & SPECIFICATIONS

MATERIAL: Body, caps and knuckle machined from 6061-T6 aluminum.

LIGHT SOURCE: Winscape proprietary replaceable LED unit using three (3) high output LEDs and an integral low voltage (11V-14V) AC/DC LED driver and a field replaceable optic. Units have near constant light output when supplied with 11VAC - 14VAC to combat voltage drop. Dimmable using standard LOW VOLTAGE MAGNETIC dimming switch/systems.

VOLTAGE: 12 Volt AC.

DISTRIBUTION: Available in three (3) beam spreads; 10° Narrow Spot, 25° Narrow Flood, and 40° Flood.

LENS: Cut from heat strengthened borosilicate glass for superior clarity and strength.

MOUNTING: Adjustable knuckle is 1/2" NPT.

POWER SUPPLY: Remote 12Vac transformer, purchased separately.

FINISH: Super durable polyester TGIC powder coat finish (standard).

FEATURES: Field replaceable lens. Tapered "Sure Lock" knuckle seat for infinite aiming and an unparalleled locking ability. Any combination of up to 3 lens accessories/color filter/shielding can be specified in any cap style and are held securely by a removable stainless steel clip ring.

LISTING: ETL

WARRANTY: 5-year limited warranty. Complete warranty terms located at www.acuitybrands.com/CustomerResources/Terms_and_conditions.aspx

Consult factory for details

NOTE: Actual performance may differ as a result of end-user environment and application. All values are design or typical values, measured under laboratory conditions at 25 °C. Specifications subject to change without notice.



9144 Deering Avenue, Second Floor • Chatsworth, CA 91311
Phone: 866.533.9901 • www.hydre.com

©2014-2017 Acuity Brands Lighting, Inc.
Rev. 12/21/17
ASPEN_LED_US

DESIGN2SHIP PROGRAM DETAILS

HOW TO ORDER

1. All Design2Ship orders should be activated through Agile. Orders must include the complete Design2Ship catalog number(s), which will include "QS" if part of the program.
2. Products not included in the Design2Ship program must be entered on a separate purchase order. *
3. Please be aware of the maximum order quantity listed on the product specification sheet. **
4. Please indicate any shipping notes or site restrictions.
5. Order Requirements
 - a. Complete ship-to address
 - b. Contact information
 - c. Complete Quick Ship catalog number
 - d. Pricing and commission rate

*Orders that include products not in the Design2Ship program will default to the longest lead time.

** If an order exceeds the product specification sheet quantity, then the following shall apply: If less than or equal to two times the maximum Design2Ship quantity, the order will be split into two delivery dates. The first shipment will go in 5 days, followed by the second in 10 days. If the order is more than two times the maximum Design2Ship quantity, then the order will not qualify as a Design2Ship order.

Maximum quantity of 25 per Quick Ship order

SHIPPING

Shipping lead time is 5 business days from date of clean release. All orders received after 3:30 p.m. EST will be processed the next business day and will receive an estimated ship date (ESD) from that date.

CHANGES/CANCELLATIONS

- Changes to the order are not permitted.
- Cancellation after release will result in a minimum 50% restocking fee.

NOTES

- Specifications subject to change without notice.
- Actual performance may differ as a result of end-user environment and application.
- No run longer than 20FT will validate using only 4FT sections.

