

M9460 SERIES

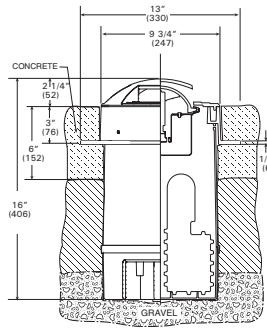
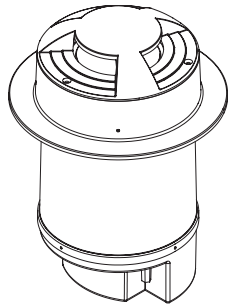
In-Grade Marker Light

Driveover Capabilities



Specifications

L:	13" 330 mm
W:	9-3/4" 247 mm
H:	16" 406 mm



CATALOG NUMBER	
NOTES	
TYPE	

DESCRIPTION

The M9460 Marker Light has drive-over capabilities and is designed for mounting in concrete driveways and parking areas. The fixture consists of a factory sealed, thermally protected lamp module that floats within the housing to minimize the effects of shock; a rugged style, non obtrusive, low impact rough-in section that will eliminate moisture intrusion and the Metal Halide and Low Voltage models have an encapsulated ballast. The M9460 has been independently tested to withstand up to a 22,000 pound static load (consult factory for more information).

ORDERING INFORMATION

EXAMPLE: M9460 35CMT6 MVOLT 34B XLS GEB LP BL

M9460	35CMT6	MVOLT	34B
Model	Lamp Type	Voltage	Conduit Entries
M9460	LOW VOLTAGE³ 50QT3 T3, G6.35 INCANDESCENT¹ 75Q T4, MC MH 35CMT4 ² T4, G8.5 Base 35CMT6 T6, G12 Base 70CMT4 ² T4, G8.5 Base 70CMT6 T6, G12 Base	12 ³ 120 ⁸ 208 ⁸ 240 ⁸ 277 ⁸ 347 ⁸ MVOLT ⁴ 22050HZ ⁹ 23050HZ ⁹ 24050HZ ⁹	12B 1/2" NPT Bottom 34B 3/4" NPT Bottom 1B 1" NPT Bottom 12S 1/2" NPT Side 34S 3/4" NPT Side 16B ⁹ PG16 Bottom 16S ⁹ PG16 Side
XLS	GEB	LP	BL
Accessories ⁸	Options	Lamp	Finish
XLS External Light Shields 2XLS Two External Light Shields	Fusing SF Single Fusing DF Double Fusing Ballasting GEB ⁵ Electronic Ballast MLEBAD ⁶	LP Lamp Installed	BL Black BZ Bronze DDB Dark Bronze DNA Natural Aluminum GN Green GR Gray SND Sand STG Steel Gray TVG Terra Verde Green WH White CF Custom __Z ⁷ Zinc Undercoat (i.e. BLZ)
			IEC ⁹ International Electro-technical Commission

Notes:

- 1 Incandescent models available with 120 Volt only.
- 2 Requires electronic balast.
- 3 Transformer sold separately.
- 4 MVOLT only available with GEB ballast.
- 5 GEB available with MH lamps only.
- 6 0-10 volt dimmer not included.
- 7 Add Zinc undercoat for harsh environments.
- 8 Only for use in 60HZ applications.
- 9 Only for use in 50HZ applications.

Consisting of:
MRIS 9640 Housing
MACM Lamp Module
MHSL94 Ballast Module





NOTE: Hydrel Reserves The Right To Modify Specification Without Notice. Any dimension on this sheet is to be assumed as a reference dimension: "Used for information purposes only. It does not govern manufacturing or inspection requirements." (ANSI Y14.5-1973)



20660 Nordhoff St., Suite B • Chatsworth, CA 91311 • www.hydrrel.com
Phone: 866.533.9901 • Fax: 866.533.5291

©2014 Acuity Brands Lighting, Inc.
5/21/14
M9460

FEATURES & SPECIFICATIONS

IP68    

ROUGH-IN SECTION CONSTRUCTION: Injection molded polymer with integral junction box for branch wiring (410 ccm - 25 in³), U.V. stabilized, impact and corrosion resistant for use in all types of environments. Houses Power Module, Lamp Modules and finishing components.

LAMP MODULE HOUSING: Stainless steel, sealed and purged of all moisture with silicone gaskets, stainless steel clamp band and single fastener. Electrical connection to Lamp Module is done through submersible connector with gold-plated contacts. **THERMALLY PROTECTED. LAMP INCLUDED**

LAMP: Low Voltage: T-3 50W Quartz

Incandescent: T-4 75W Quartz

HID: G-12 70W Max. T-6 Metal Halide

FIXTURE HEAD: Heavy wall cast aluminum outer shell that attaches to rough in housing independent of the Lamp Module.

VOLTAGE: See ordering guide.

POWER MODULE: Ballast is encapsulated in a custom-heat dissipating epoxy resin to eliminate all moisture intrusion to the ballast. Provided with submersible rated cord/connector. **THERMALLY PROTECTED.**

ELECTRICAL ENTRIES JUNCTION BOX: Two (2) 3/4" NPT or PG16 bottom openings. Junction box suitable for through branch wiring. Splicing volume is 25 cu. inches (410 cu:cm).

FINISH: See ordering guide for color options.

LISTING: U.L., C.U.L., CE, NEMKO

